



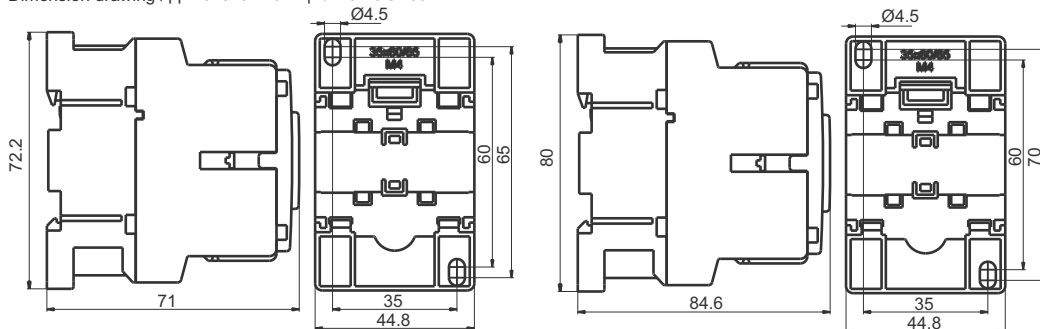
RADE KONČAR KONTAKTORI I RELEI D.O.O.

INSTRUCTIONS FOR USE AND MAINTENANCE

УПАТСТВО ЗА УПОТРЕБА И ОДРЖУВАЊЕ
UPUSTVO ZA UPOTREBU I ODRŽAVANJE

CNN 9, CNN 12, CNN 18, CNN 22, CNN 25, CNN 30, CNN 32, CNN 40
IEC 60947-4-1, EN 60947-4-1

Dimension drawing / Димензиски скици / Merne skice

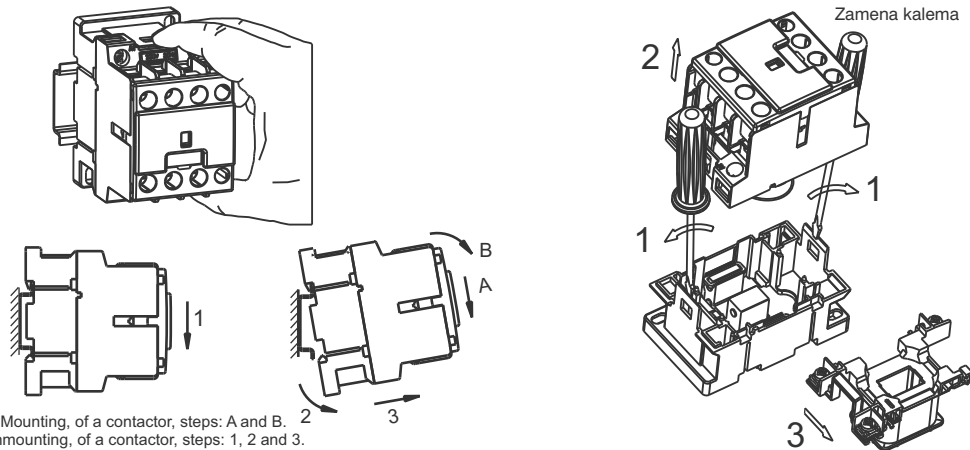


CNN 9, CNN 12, CNN 18, CNN 22, CNN 25, CNN 30

CNN N32, CNN 40

Mounting on rail 35mm (DIN 50022) / Монтирање на шина 35мм / Montaža na šinu 35mm

Replacement of the coil
Замена на калем
Zamena kalema

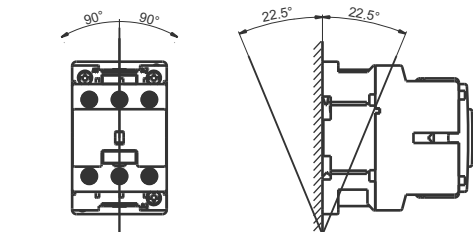


Mounting, of a contactor, steps: A and B.
Unmounting, of a contactor, steps: 1, 2 and 3.

Монтирање на контактор, чекор: А и Б
Демонтирање на контактор, чекор 1, 2 и 3
Montaža kontaktora, korak: A i B
Demontaža kontaktora, korak: 1, 2 i 3

Conductor cross section
Пресек на проводник
Presek provodnika

	CNN 9 CNN 12 CNN 18	CNN 25 CNN 30 CNN 32 CNN 40	mm ²
Solid	1.5-6 + 1.5-6	2.5-10 + 2.5-10	
Fine Wire	1-4 + 1-4	1.5-6 + 1.5-6	



Possible installation positions / Можни инсталациони позиции / Mogući položaj instalacije



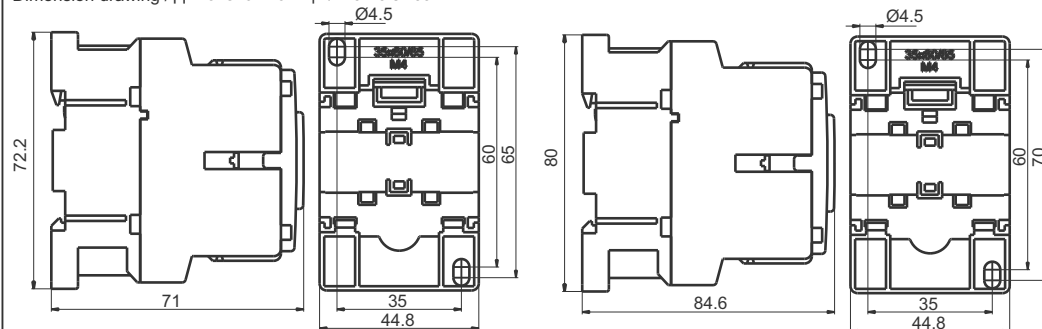
RADE KONČAR KONTAKTORI I RELEI D.O.O.

INSTRUCTIONS FOR USE AND MAINTENANCE

УПАТСТВО ЗА УПОТРЕБА И ОДРЖУВАЊЕ
UPUSTVO ZA UPOTREBU I ODRŽAVANJE

CNN 9, CNN 12, CNN 18, CNN 22, CNN 25, CNN 30, CNN 32, CNN 40
IEC 60947-4-1, EN 60947-4-1

Dimension drawing / Димензиски скици / Merne skice

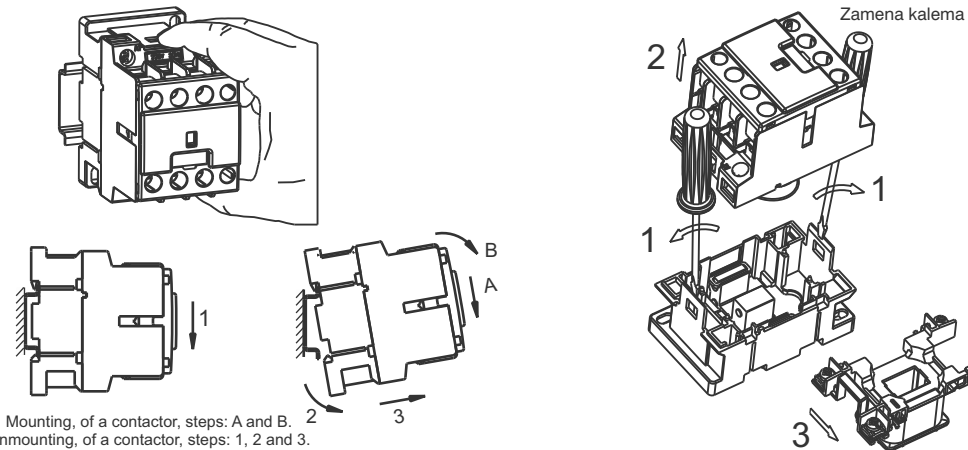


CNN 9, CNN 12, CNN 18, CNN 22, CNN 25, CNN 30

CNN N32, CNN 40

Mounting on rail 35mm (DIN 50022) / Монтирање на шина 35мм / Montaža na šinu 35mm

Replacement of the coil
Замена на калем
Zamena kalema

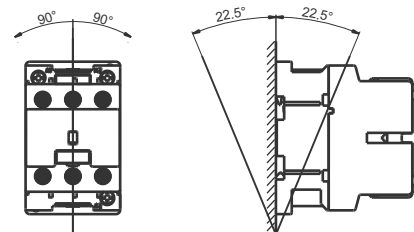


Mounting, of a contactor, steps: A and B.
Unmounting, of a contactor, steps: 1, 2 and 3.

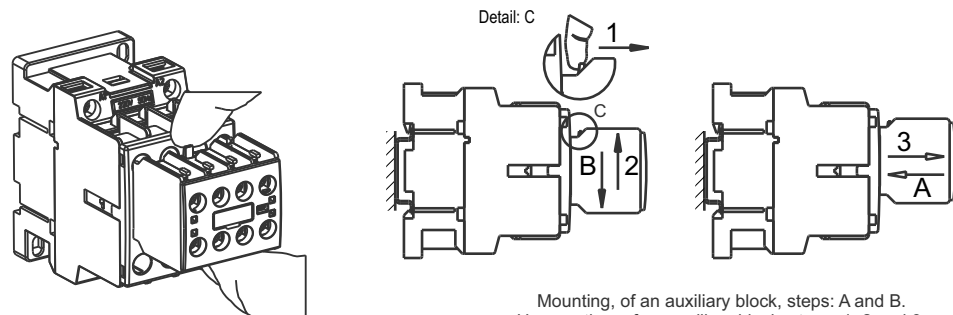
Монтирање на контактор, чекор: А и Б
Демонтирање на контактор, чекор 1, 2 и 3
Montaža kontaktora, korak: A i B
Demontaža kontaktora, korak: 1, 2 i 3

Conductor cross section
Пресек на проводник
Presek provodnika

	CNN 9 CNN 12 CNN 18	CNN 25 CNN 30 CNN 32 CNN 40	mm ²
Solid	1.5-6 + 1.5-6	2.5-10 + 2.5-10	
Fine Wire	1-4 + 1-4	1.5-6 + 1.5-6	



Possible installation positions / Можни инсталациони позиции / Mogući položaj instalacije

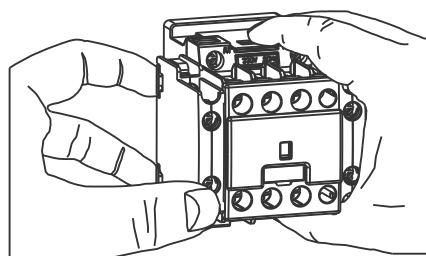


Mounting auxiliary block BP3
Монтирање помошен блок БП3
Montaža pomožni blok BP3

Mounting, of an auxiliary block, steps: A and B.
Unmounting, of an auxiliary block, steps: 1, 2 and 3.

Монтирање на помошен блок, чекор: А и Б
Демонтирање на помошен блок, чекор 1, 2 и 3

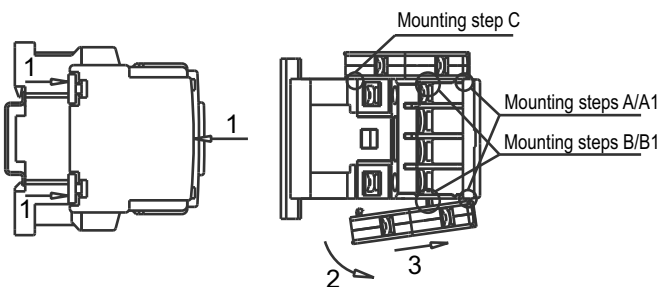
Montaža pomožni blok, korak: A i B
Demontaža pomožni blok, korak: 1, 2 i 3



Mounting step A Mounting step A1



Mounting step B Mounting step B1 Mounting step C

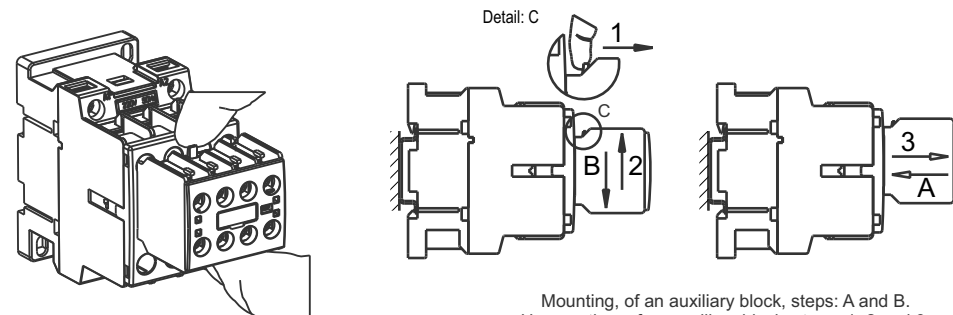


Mounting, of an auxiliary block, steps:
- First put the block in position A/A1 and B/B1, second push the block in position C
Unmounting, of an auxiliary block, steps:
- First put the hand on the block like it is shown on the picture. After with the two fingers push it up the block - position 1, rotate the block - position 2 and position 3 take off the block.

311030X

RADE KONČAR KONTAKTORI I RELEI D.O.O.

1000 - Skopje, Macedonia, III Makedonska brigada br.54
Tel./Fax++389 (0)2/ 2461-106; 2465-586; 2463620; 2463-596
E-mail:marketing@radekoncar.com.mk, E-mail:export@radekoncar.com.mk;
http://www.radekoncar.com.mk

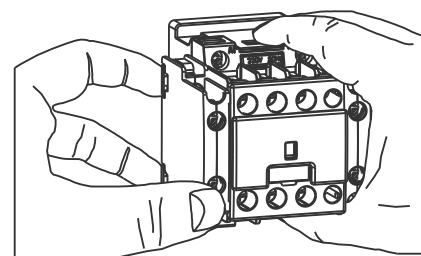


Mounting auxiliary block BP3
Монтирање помошен блок БП3
Montaža pomožni blok BP3

Mounting, of an auxiliary block, steps: A and B.
Unmounting, of an auxiliary block, steps: 1, 2 and 3.

Монтирање на помошен блок, чекор: А и Б
Демонтирање на помошен блок, чекор 1, 2 и 3

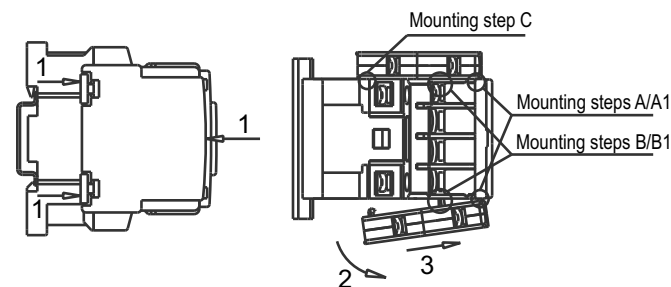
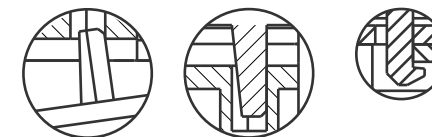
Montaža pomožni blok, korak: A i B
Demontaža pomožni blok, korak: 1, 2 i 3



Mounting step A Mounting step A1



Mounting step B Mounting step B1 Mounting step C



Mounting, of an auxiliary block, steps:
- First put the block in position A/A1 and B/B1, second push the block in position C
Unmounting, of an auxiliary block, steps:
- First put the hand on the block like it is shown on the picture. After with the two fingers push it up the block - position 1, rotate the block - position 2 and position 3 take off the block.

311030X

RADE KONČAR KONTAKTORI I RELEI D.O.O.

1000 - Skopje, Macedonia, III Makedonska brigada br.54
Tel./Fax++389 (0)2/ 2461-106; 2465-586; 2463620; 2463-596
E-mail:marketing@radekoncar.com.mk, E-mail:export@radekoncar.com.mk;
http://www.radekoncar.com.mk

