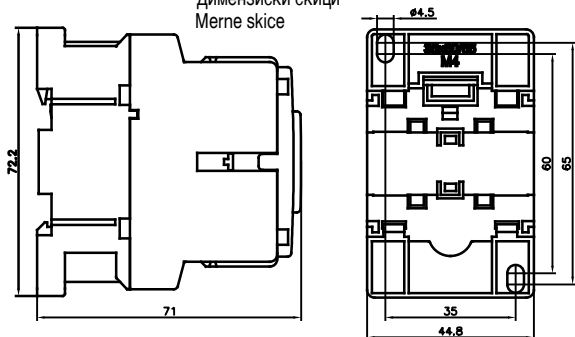




INSTRUCTIONS FOR USE AND MAINTENANCE  
УПАТСТВО ЗА УПОТРЕБА И ОДРЖУВАЊЕ  
UPUSTVO ZA UPOTREBU I ODRŽAVANJE

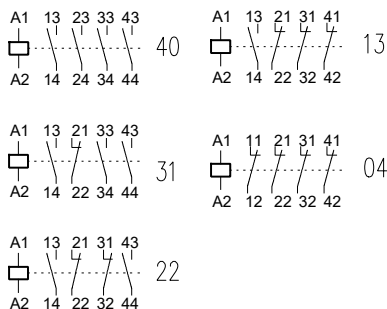
CNNP 40, CNNP 31, CNNP 22, CNNP 13, CNNP 04  
IEC 60947-1, IEC 60947-5

Dimension drawing  
Димензиски скици  
Merne skice

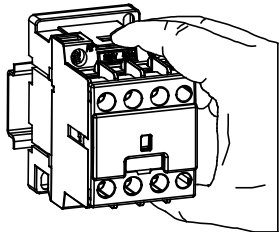


Connection diagrams and terminal markings

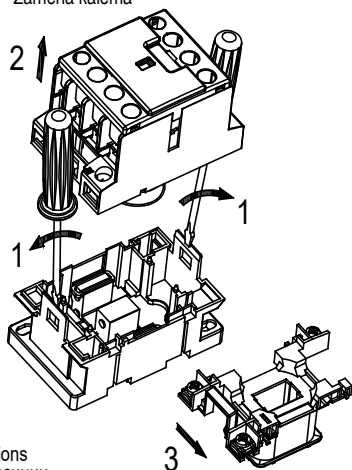
AC coil operation



Mounting on rail 35mm (DIN 50022)  
Монтирање на шина 35mm  
Montaža na šinu 35mm

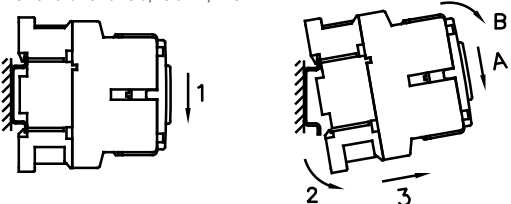


Replacement of the coil  
Замена на калем  
Zamena kalema

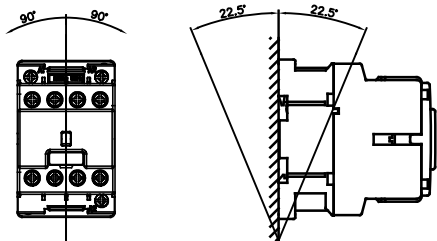


Mounting, of a contactor, steps: A and B.  
Unmounting, of a contactor, steps: 1, 2 and 3.  
Монтирање на контактор, чекор: А и Б  
Демонтирање на контактор, чекор 1, 2 и 3

Montaža kontaktora, korak: A i B  
Demontaža kontaktora, korak: 1, 2 i 3



Possible installation positions  
Можни инсталациони позиции  
Mogući položaj instalacije



Conductor cross section  
Пресек на проводник  
Presek provodnika

		CNNP	
Solid		1.5-4	mm <sup>2</sup>
		1.5-4	
		1.5-4	
Fine Wire		1-4	mm <sup>2</sup>
		1-4	
		1-4	

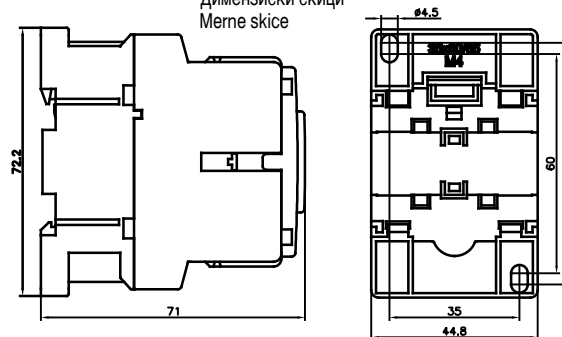
Part numb. 504030/A



INSTRUCTIONS FOR USE AND MAINTENANCE  
УПАТСТВО ЗА УПОТРЕБА И ОДРЖУВАЊЕ  
UPUSTVO ZA UPOTREBU I ODRŽAVANJE

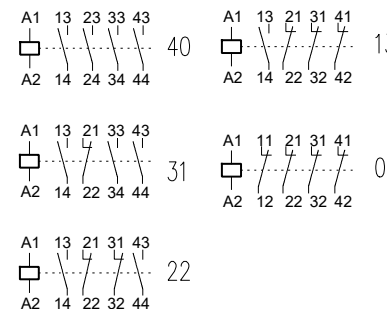
CNNP 40, CNNP 31, CNNP 22, CNNP 13, CNNP 04  
IEC 60947-1, IEC 60947-5

Dimension drawing  
Димензиски скици  
Merne skice

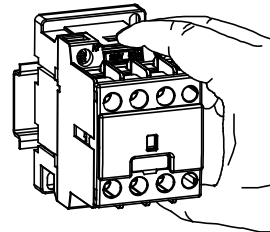


Connection diagrams and terminal markings

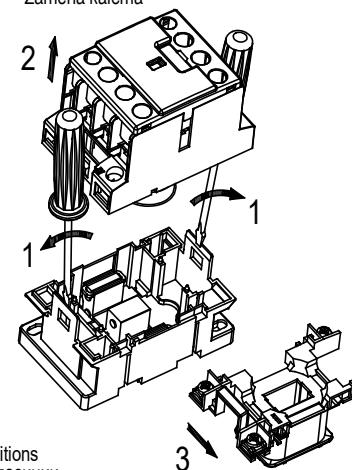
AC coil operation



Mounting on rail 35mm (DIN 50022)  
Монтирање на шина 35mm  
Montaža na šinu 35mm

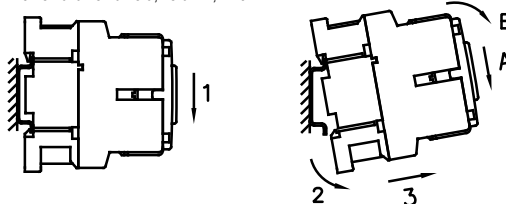


Replacement of the coil  
Замена на калем  
Zamena kalema

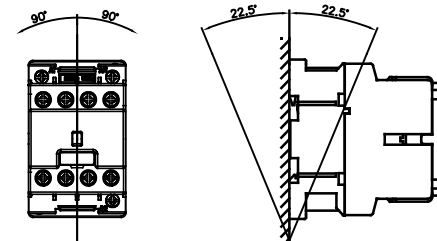


Mounting, of a contactor, steps: A and B.  
Unmounting, of a contactor, steps: 1, 2 and 3.  
Монтирање на контактор, чекор: А и Б  
Демонтирање на контактор, чекор 1, 2 и 3

Montaža kontaktora, korak: A i B  
Demontaža kontaktora, korak: 1, 2 i 3



Possible installation positions  
Можни инсталациони позиции  
Mogući položaj instalacije

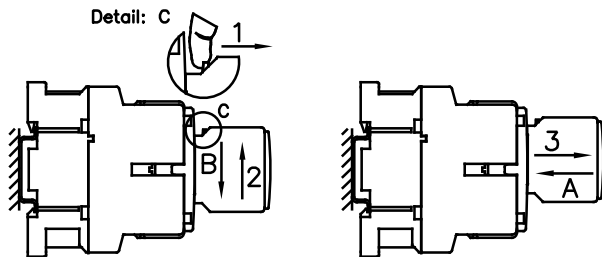
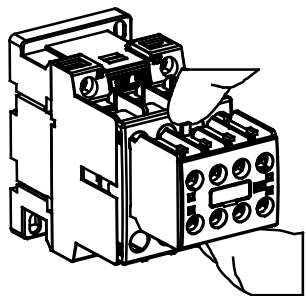


Conductor cross section  
Пресек на проводник  
Presek provodnika

		CNNP	
Solid		1.5-4	mm <sup>2</sup>
		1.5-4	
		1.5-4	
Fine Wire		1-4	mm <sup>2</sup>
		1-4	
		1-4	

Part numb. 504030/A

Mounting auxiliary blocks BP2 and BP4  
 Монтирање помошни блокови БП2 и БП4  
 Montaža pomožnih blokova BP2 i BP4

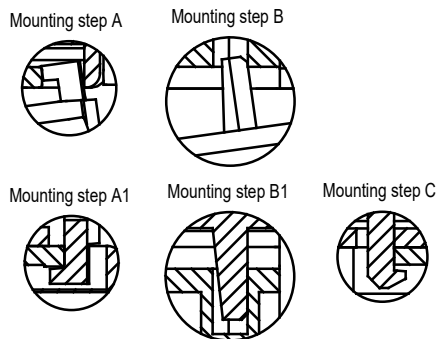
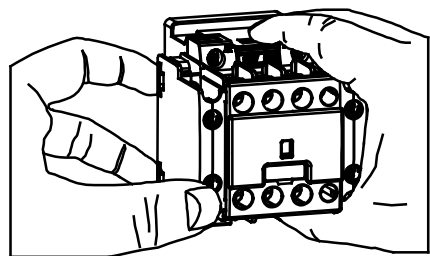


Mounting, of an auxiliary block, steps: A and B.  
 Unmounting, of an auxiliary block, steps: 1, 2 and 3.

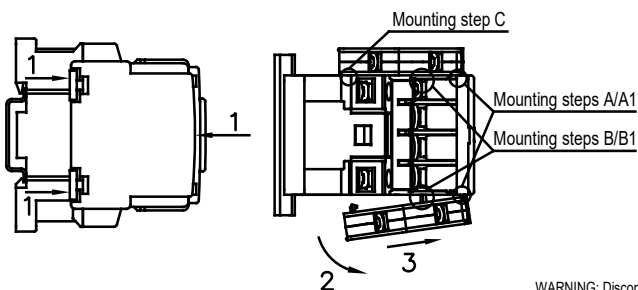
Монтирање на помошен блок, чекор: А и Б  
 Демонтирање на помошен блок, чекор 1, 2 и 3

Montaža pomožni blok, korak: A i B  
 Demontaža pomožni blok, korak: 1, 2 i 3

Mounting auxiliary block BP3  
 Монтирање помошен блок БП3  
 Montaža pomožni blok BP3

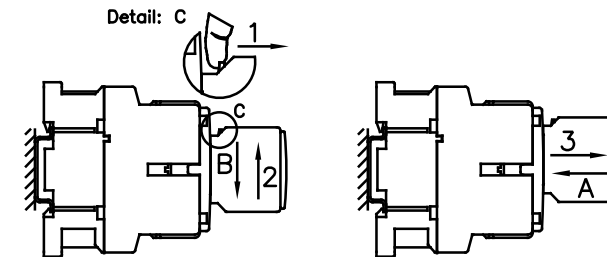
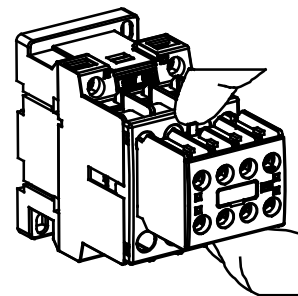


Mounting, of an auxiliary block, steps:  
 - First put the block in position A/A1 and B/B1, second push the block in position C  
 Unmounting, of an auxiliary block, steps:  
 - First put the hand on the block like it is shown on the picture. After with the two fingers push it up the block - position 1, rotate the block - position 2 and position 3 take off the block.



WARNING: Disconnect power from source before installing, modifying or servicing.  
 ПРЕДУПРЕДУВАЊЕ: Исклучи го напојувањето пред инсталација, менување или сервисирање  
 UPOZORENJE: Isključiti napajanje izvora pre instalacije, modifikovanje ili servisiranje

Mounting auxiliary blocks BP2 and BP4  
 Монтирање помошни блокови БП2 и БП4  
 Montaža pomožnih blokova BP2 i BP4

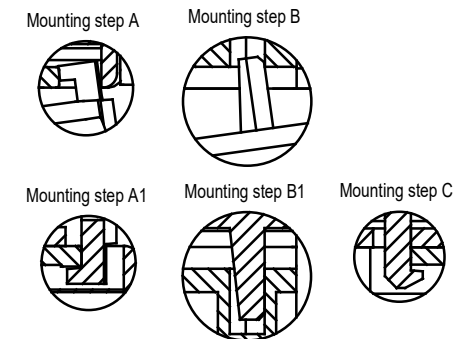
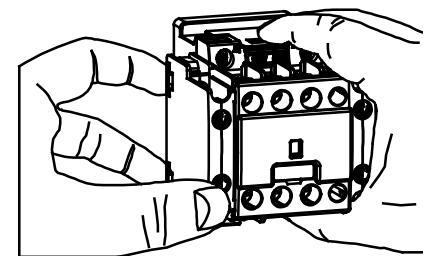


Mounting, of an auxiliary block, steps: A and B.  
 Unmounting, of an auxiliary block, steps: 1, 2 and 3.

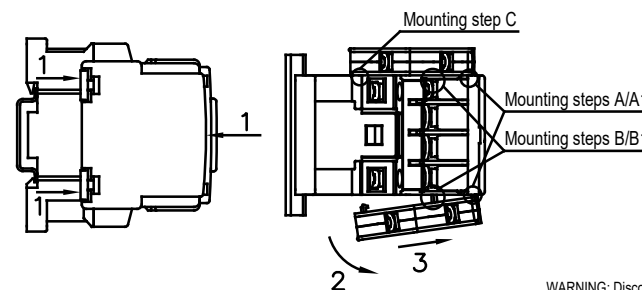
Монтирање на помошен блок, чекор: А и Б  
 Демонтирање на помошен блок, чекор 1, 2 и 3

Montaža pomožni blok, korak: A i B  
 Demontaža pomožni blok, korak: 1, 2 i 3

Mounting auxiliary block BP3  
 Монтирање помошен блок БП3  
 Montaža pomožni blok BP3



Mounting, of an auxiliary block, steps:  
 - First put the block in position A/A1 and B/B1, second push the block in position C  
 Unmounting, of an auxiliary block, steps:  
 - First put the hand on the block like it is shown on the picture. After with the two fingers push it up the block - position 1, rotate the block - position 2 and position 3 take off the block.



WARNING: Disconnect power from source before installing, modifying or servicing.  
 ПРЕДУПРЕДУВАЊЕ: Исклучи го напојувањето пред инсталација, менување или сервисирање  
 UPOZORENJE: Isključiti napajanje izvora pre instalacije, modifikovanje ili servisiranje



**R.KONČAR** KONTAKTORI I RELEI D.O.O.

1000 - Skopje, Macedonia, III Makedonska brigada br. 54  
 Tel./Fax++389 (0)2/ 2461-106; 2465-586; 2463620; 2463-596  
 E-mail:marketing@radekoncar.com.mk  
 E-mail:export@radekoncar.com.mk;  
 http://www.radekoncar.com.mk



RECYCLABLE



**R.KONČAR** KONTAKTORI I RELEI D.O.O.

1000 - Skopje, Macedonia, III Makedonska brigada br. 54  
 Tel./Fax++389 (0)2/ 2461-106; 2465-586; 2463620; 2463-596  
 E-mail:marketing@radekoncar.com.mk  
 E-mail:export@radekoncar.com.mk;  
 http://www.radekoncar.com.mk



RECYCLABLE