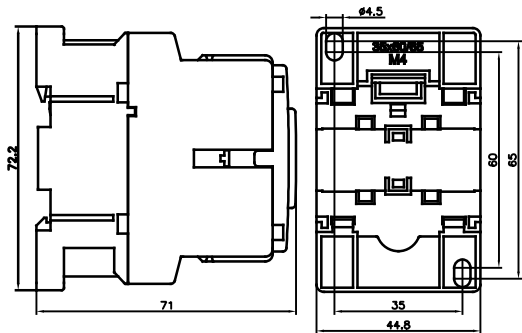




INSTRUCTIONS FOR USE AND MAINTENANCE
УПАТСТВО ЗА УПОТРЕБА И ОДРЖУВАЊЕ
UPUSTVO ZA UPOTREBU I ODRŽAVANJE

CONTACTORS CANNK 2,5 ; CANNK 5 ; CANNK 7,5
IEC 60947-4-1, EN 60947-4-1

Dimension drawing / Димензиски скици / Merne skice



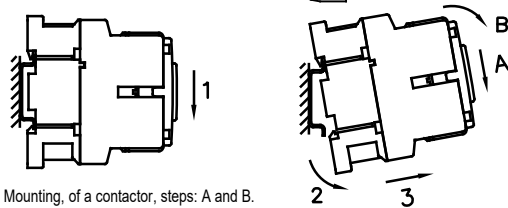
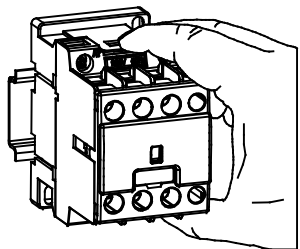
Mounting on rail 35mm (DIN 50022) /
Монтирање на шина 35мм /
Montaža na šinu 35mm

⚠ Maximum permissible peak current $1 < 100$ times
the nominal rms current of the switched capacitor

WARNING:
HAZARDOUS VOLTAGE CAN CAUSE ELECTRICAL SHOCK AND BURNS.
DISCONNECT POWER BEFORE PROCEEDING WITH ANY WORK ON THIS EQUIPMENT.
WHEN THE SYSTEM VOLTAGE IS APPLIED AND THE LOAD IS CONNECTED,
DO NOT OPERATE THE CONTACTOR BY PRESSING DOWN THE POSITION INDICATOR.
MANUAL OPERATION NOT PERMITTED FOR FUNCTION TESTING.
SWITCH ONLY ON TO DISCHARGED CAPACITORS.

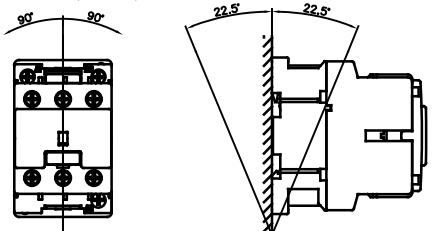
VERY IMPORTANT NOTE:

For single compensation air coils or 3-phase reactors (coils with magnetic core and air gap) are not necessary.
When the contactor is used for group (central) compensation we recommend to use appropriate 3-phase filter circuit reactors (coils with magnetic core and air gap).
At single compensation the power of selected contactor is according to capacitor's rated power.
At group and central compensation the power of selected contactor has to be one step higher than capacitor's rated power (if you don't use reactors).
During exploitation, current value must not exceed the declared values.



Mounting, of a contactor, steps: A and B.
Unmounting, of a contactor, steps: 1, 2 and 3.

Монтирање на контактор, чекор: А и Б
Демонтирање на контактор, чекор 1, 2 и 3
Montaža kontaktora, korak: A i B
Demontaža kontaktora, korak: 1, 2 i 3



Possible installation positions / Могни инсталациони позиции / Mogući položaj instalacije

Conductor cross section
Пресек на проводник
Presek provodnika

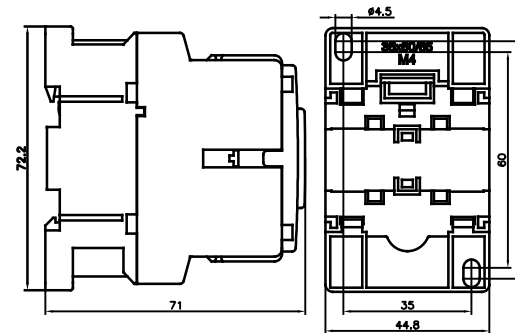
	CANNK 2,5	CANNK 5	CANNK 7,5
Solid	1.5-6	2.5-10	2.5-10
	1.5-6 +	2.5-10 +	2.5-10
	1.5-6	2.5-10	
Fine Wire	1-4	1.5-6	
	1-4 +	1.5-6 +	
	1-4	1.5-6	



INSTRUCTIONS FOR USE AND MAINTENANCE
УПАТСТВО ЗА УПОТРЕБА И ОДРЖУВАЊЕ
UPUSTVO ZA UPOTREBU I ODRŽAVANJE

CONTACTORS CANNK 2,5 ; CANNK 5 ; CANNK 7,5
IEC 60947-4-1, EN 60947-4-1

Dimension drawing / Димензиски скици / Merne skice



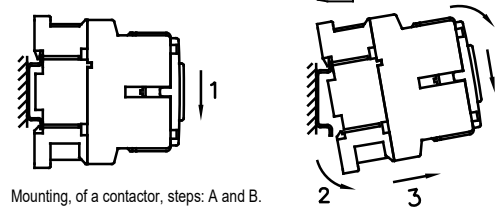
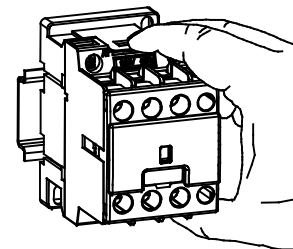
Mounting on rail 35mm (DIN 50022) /
Монтирање на шина 35мм /
Montaža na šinu 35mm

⚠ Maximum permissible peak current $1 < 100$ times
the nominal rms current of the switched capacitor

WARNING:
HAZARDOUS VOLTAGE CAN CAUSE ELECTRICAL SHOCK AND BURNS.
DISCONNECT POWER BEFORE PROCEEDING WITH ANY WORK ON THIS EQUIPMENT.
WHEN THE SYSTEM VOLTAGE IS APPLIED AND THE LOAD IS CONNECTED,
DO NOT OPERATE THE CONTACTOR BY PRESSING DOWN THE POSITION INDICATOR.
MANUAL OPERATION NOT PERMITTED FOR FUNCTION TESTING.
SWITCH ONLY ON TO DISCHARGED CAPACITORS.

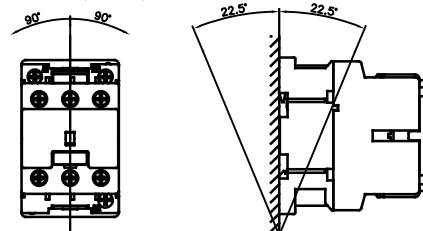
VERY IMPORTANT NOTE:

For single compensation air coils or 3-phase reactors (coils with magnetic core and air gap) are not necessary.
When the contactor is used for group (central) compensation we recommend to use appropriate 3-phase filter circuit reactors (coils with magnetic core and air gap).
At single compensation the power of selected contactor is according to capacitor's rated power.
At group and central compensation the power of selected contactor has to be one step higher than capacitor's rated power (if you don't use reactors).
During exploitation, current value must not exceed the declared values.



Mounting, of a contactor, steps: A and B.
Unmounting, of a contactor, steps: 1, 2 and 3.

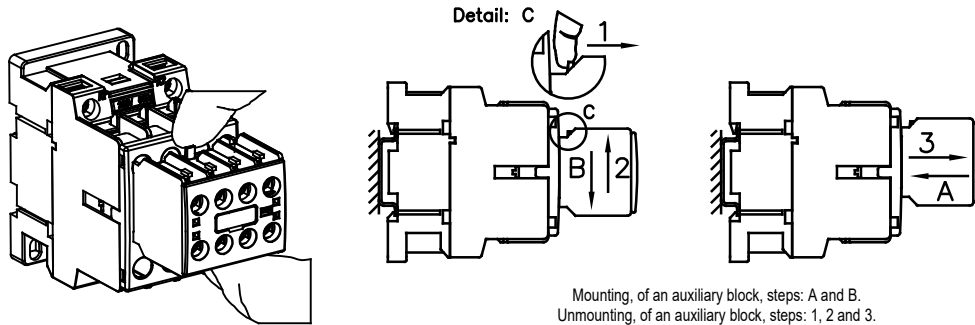
Монтирање на контактор, чекор: А и Б
Демонтирање на контактор, чекор 1, 2 и 3
Montaža kontaktora, korak: A i B
Demontaža kontaktora, korak: 1, 2 i 3



Possible installation positions / Могни инсталациони позиции / Mogući položaj instalacije

Conductor cross section
Пресек на проводник
Presek provodnika

	CANNK 2,5	CANNK 5	CANNK 7,5
Solid	1.5-6	2.5-10	2.5-10
	1.5-6 +	2.5-10 +	2.5-10
	1.5-6	2.5-10	
Fine Wire	1-4	1.5-6	
	1-4 +	1.5-6 +	
	1-4	1.5-6	

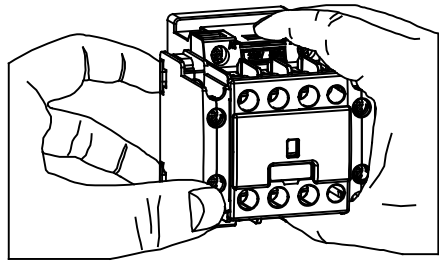


Mounting, of an auxiliary block, steps: A and B.
Unmounting, of an auxiliary block, steps: 1, 2 and 3.

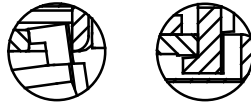
Монтирање на помошен блок, чекор: А и Б
Демонтирање на помошен блок, чекор 1, 2 и 3

Montaža pomožni blok, korak: A i B
Demontaža pomožni blok, korak: 1, 2 i 3

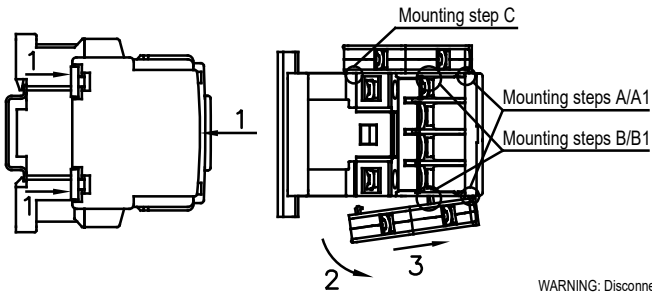
Mounting auxiliary block BP3
Монтирање помошен блок БП3
Montaža pomožni blok BP3



Mounting step A Mounting step A1



Mounting step B Mounting step B1 Mounting step C



Mounting, of an auxiliary block, steps:
- First put the block in position A/A1 and B/B1, second push the block in position C
Unmounting, of an auxiliary block, steps:
- First put the hand on the block like it is shown on the picture. After with the two fingers push it up the block - position 1, rotate the block - position 2 and position 3 take off the block.

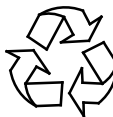
WARNING: Disconnect power from source before installing, modifying or servicing.
ПРЕДУПРЕДУВАЊЕ: Исклучи го напојувањето пред инсталација, менување или сервисирање
UPOZORENJE: Isključiti napajanje izvora pre instalacije, modifikovanje ili servisiranje

311030K

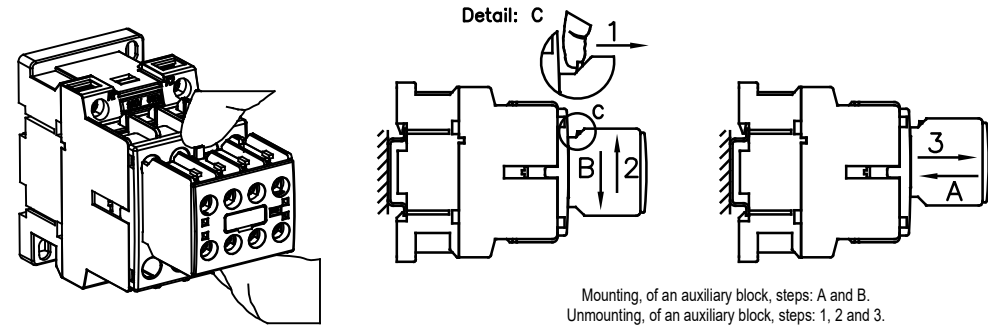


R.KONČAR KONTAKTORI I RELEI D.O.O.

1000 - Skopje, Macedonia, III Makedonska brigada b.b.
Tel./Fax++389 (0)2/ 2461-106; 2465-586; 2463620; 2463-596
E-mail:marketing@radekoncar.com.mk
E-mail:export@radekoncar.com.mk;
http://www.radekoncar.com.mk



RECYCLABLE

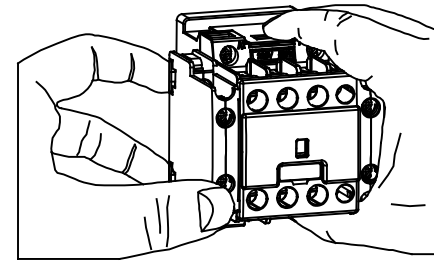


Mounting, of an auxiliary block, steps: A and B.
Unmounting, of an auxiliary block, steps: 1, 2 and 3.

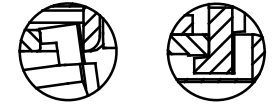
Монтирање на помошен блок, чекор: А и Б
Демонтирање на помошен блок, чекор 1, 2 и 3

Montaža pomožni blok, korak: A i B
Demontaža pomožni blok, korak: 1, 2 i 3

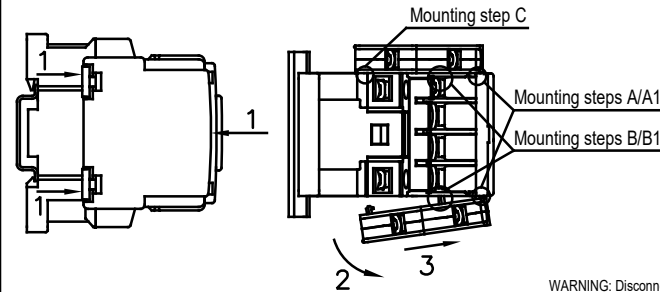
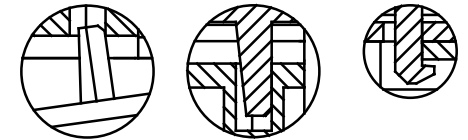
Mounting auxiliary block BP3
Монтирање помошен блок БП3
Montaža pomožni blok BP3



Mounting step A Mounting step A1



Mounting step B Mounting step B1 Mounting step C



Mounting, of an auxiliary block, steps:
- First put the block in position A/A1 and B/B1, second push the block in position C
Unmounting, of an auxiliary block, steps:
- First put the hand on the block like it is shown on the picture. After with the two fingers push it up the block - position 1, rotate the block - position 2 and position 3 take off the block.

WARNING: Disconnect power from source before installing, modifying or servicing.
ПРЕДУПРЕДУВАЊЕ: Исклучи го напојувањето пред инсталација, менување или сервисирање
UPOZORENJE: Isključiti napajanje izvora pre instalacije, modifikovanje ili servisiranje

311030K



R.KONČAR KONTAKTORI I RELEI D.O.O.

1000 - Skopje, Macedonia, III Makedonska brigada b.b.
Tel./Fax++389 (0)2/ 2461-106; 2465-586; 2463620; 2463-596
E-mail:marketing@radekoncar.com.mk
E-mail:export@radekoncar.com.mk;
http://www.radekoncar.com.mk



RECYCLABLE